

λ_1

$IQ (\varepsilon_{ij} = 0)$

$IQ (\varepsilon_{ij} = 0)$

$OL (\eta_\sigma + \eta_c > 0)$

λ_1

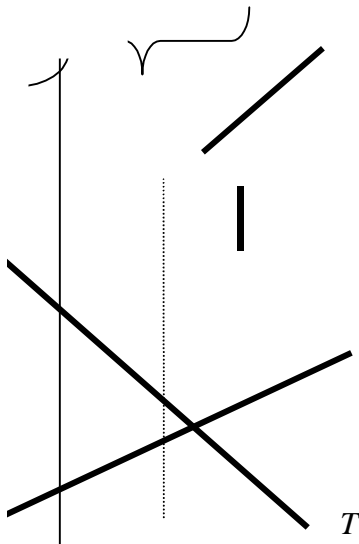
$IQ (f_{ij} > f_{ii})$

$IQ (f_{ij} < f_{ii})$

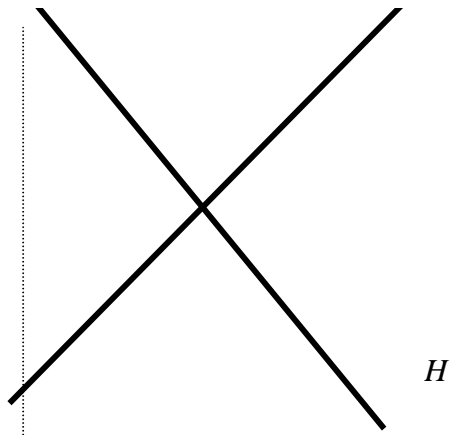
$OL (\eta_\sigma + \eta_c = 0)$

$\lambda_1^* (\eta_\sigma + \eta_c = 0)$

H^*



T



H

0

L

